

FALCO Meet2

TVF 06.07.2022



SCHEDULE

8 July (Friday) – Lisbon, NOVA (Colégio Almada Negreiros, Room **219**)

from 9:00 – *Welcome (at the café, ground floor)*

9:30 – Introduction (30 mins)

10:00 – “Medieval falconry as a field of research: intersecting perspectives during the last decennia”, with Prof. Baudouin van den **Abeele** (30 min talk + 15 discussion)

10:45 – Coffee break

11:00 – **EC4** Courtly papers & historiography (40+20 mins)

12:00 – **EC3** Legal and administrative records (40+20 mins)

13:00 – Lunch (Restaurante “O Baloíço”)

14:45 – Starting to collect and interpret data for FALCO”, with Afonso **Sousa** (Bolseiro) (15+15 mins)

15:15 – **EC2** Fiction, poetry & popular tradition (40+20 mins)

16:15 – **EC1** Moral & encyclopaedic works (25+20 mins)

17:00 – Coffee break

17:15 – “The *Archivo Iberoamericano de Cetrería* from hobby to research project”, with Prof. José Manuel **Fradejas** (40+20 mins)

18:15 – Round table: Approaching visual sources (40 mins)

19:00 – Close of day

9 July (Saturday) – Salvaterra de Magos, Falcoaria Real

7:55 – At meeting point (outside CAN)

8:10 – Departure to Salvaterra de Magos

9:30 – Morning coffee at Falcoaria Real

9:45 – Visit to Falcoaria Real, with Patrícia **Leite** (Câmara Municipal de Salvaterra de Magos) (20+10 mins)

10:15 – Visit to the mews with the master **falconer**: Birds of prey and their upkeep (40+20 mins)

11:15 – “An introduction to bone testing and the Laboratório de Arqueociências - LARC”, with Prof. Carlos **Pimenta** (15+15 mins)

12:00 – Lunch (venue TBC)

14:00 – **EC5** Practical literature and the natural record (50+25 mins)

15:15 – **Balance & Perspectives** (Planning; Methodology; Database; Conferences; Communication; Outputs...) (around 100 mins)

17:00 – coffee/tea, refreshments & free time

18:00 – Departure to Lisbon

19:30 – Arrival in Lisbon (outside CAN)

Emergency contacts:

Tiago 966 083 788 | Afonso 965 359 098

FALCO Meet2

TVF 06.07.2022



Bem-vindos!! Bienvenidos, bienvenus, welcome ...

Here's some practical information regarding our meeting.

VENUE

8 July – Lisbon, Colégio Almada Negreiros (CAN) in Campus de Campolide of the Universidade Nova [see last page for details]

9 July – Salvaterra de Magos (departure from CAN at 8:10 **promptly** ; return to CAN by 19:30)

Lunch and coffee breaks are provided on both days

ACCOMMODATION

Hotel Príncipe (Lisbon) – 15 min. walk east of CAN [see page below for details]

INFORMATION ON PRESENTING FOR YOUR EXPLORATION CLUSTER(S)

EC presentation – 10 to 15 minutes maximum per speaker (or 15 to 20 maximum if presenting with a colleague) . Please keep to the time!!

For the sake of consistency, follow the Source Research Grid as closely as possible (it's fine to leave some points out, no need to address every single one.)

Given that everyone on site is a Romance speaker, feel free to present in your native language if you like. If also using powerpoint – which might be advisable – you may want to do your slides in a different language. (Eg., speaking in French, slides in English ; speaking in Portuguese, slides in French... in whatever combination.) Discussion of the papers may be held primarily in Portuguese.

JOINING REMOTELY

It's possible to take part remotely through Zoom / Colibri : <https://videoconf-colibri.zoom.us/j/87564973912?pwd=X9XH05z7KKCxLdBAPqNYVqhiPDyhek.1> . The link should stay active for the most part of the meeting.





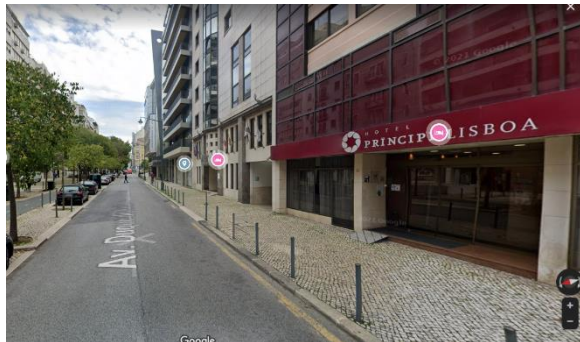
Venue in Lisbon

CAN - Colégio Almada Negreiros (at Campus de Campolide, Univ. Nova)
1099-085 Lisboa

It's the big yellow building, entry door to the left of the main façade →

For the café, once inside walk to the right

For the seminar room 219, go up **one** floor

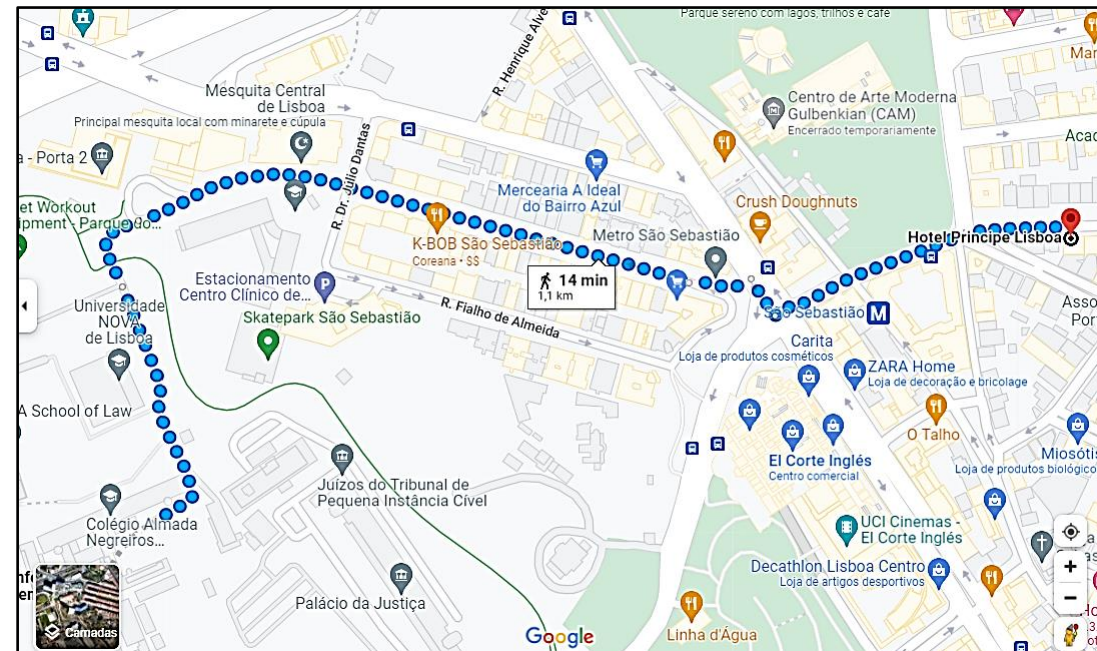


Accommodation Hotel Príncipe

Avenida Duque de Avila 201
1050-082 . Lisbon, Portugal

(Closest Metro Station:
SÃO SEBASTIÃO on the Red Line)

+351 213 592 050 | hpl@hotelprincipelisboa.com



See you soon ...